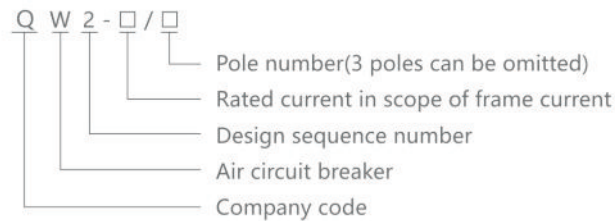




General

QW2-1000 series intelligent air circuit breakers (hereinafter called ACB) are applied for the network circuit of AC 50Hz, rated voltage 400V, 690V and rated current up to 1000A. Mainly used for distributing energy and protecting the circuit and power supply device against short-circuit, undervoltage, single-phase ground fault etc. The ACB have intelligent protection function and the key parts adopt intelligent release. The release can make the accurate selective protection, which can avoid cutting off the power and improve the reliability of power supply. The products confirm with IEC60947-2, GB14048.2.

Type designation



Category

Installation: Fixed type, draw out type.

Operation: Motor-driven, hand.

Main Technical Parameters

Type	QW2-1000				
Rated short circuit breaking capacity	I _{cu} =42kA 400V		400V		
	I _{cs} =I _{cw} /1s=30kA		400V		
Rated current I _n (A)	I _{cu} =25kA 690V		690V		
	I _{cs} =I _{cw} /1s=20kA		690V		
Rated current I _n (A)	200	400	630	800	1000
Pole	3P, 4P				
Rated operation voltage U _e (V)	400				
Rated insulation voltage U _i (V)	690				
N pole max continuous current I _n (A)	100%I _n				
Breaking time (ms)	23~32				
Control unit	Standard (M)	●	●	●	●
	Multi-function (H)	●	●	●	●
Operation life	Electrical	1000			
	Mechanical	maintenance-free 3000			
		maintenance 10000			
Connection mode	Horizontal, vertical				
Weight	3P/4P draw out type	38/55			
	3P/4P fixed type	22/26.5			

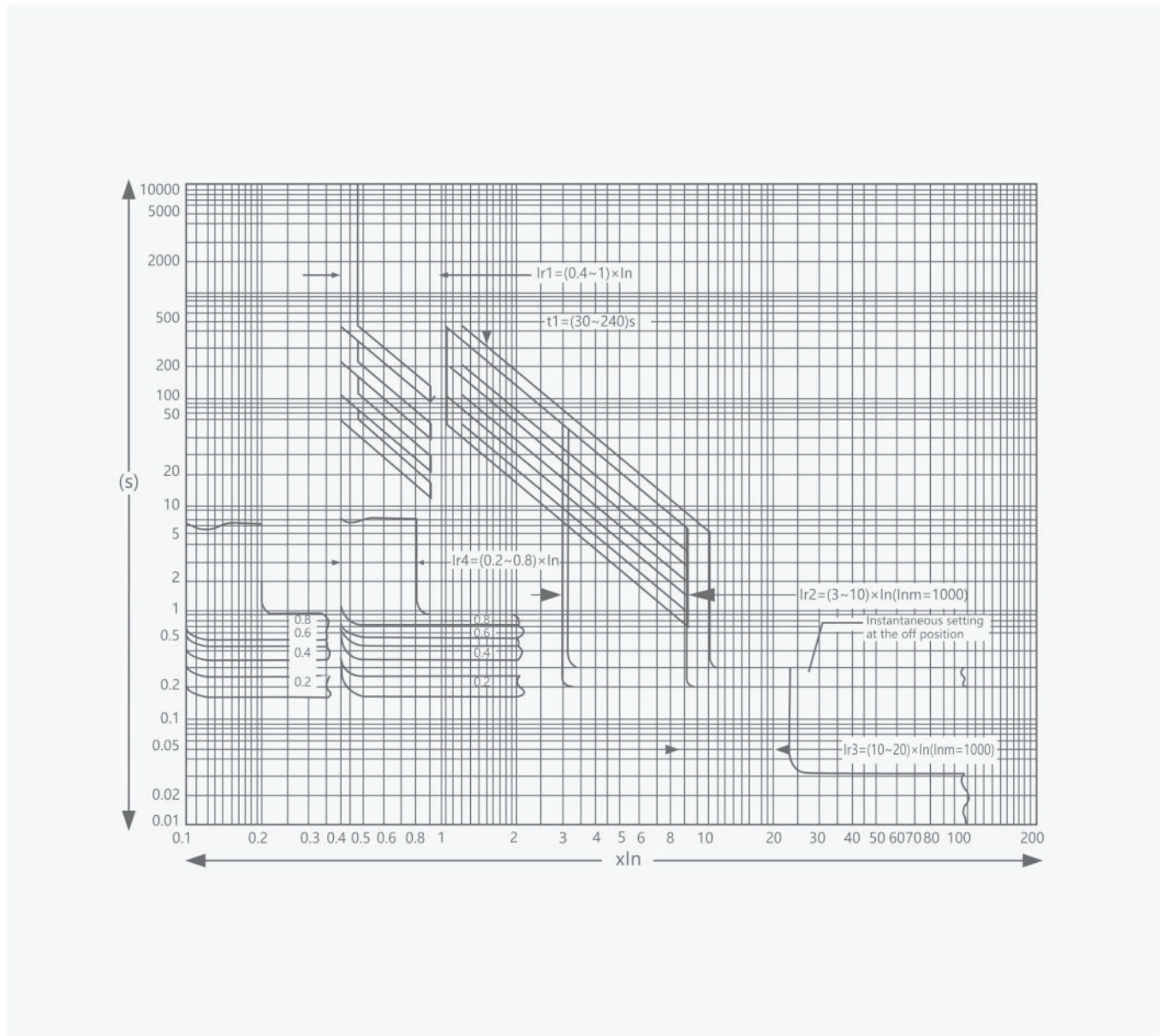
Intelligent controller protection characteristic

Definite setting and error for Intelligent Controller

Long time-delay		Short time-delay		Instantaneous		Earthing fault	
Ir1	Ir2	Error	Ir3	Error	Ir3	Error	Error
$(0.4\sim 1)I_n$	$(1.5\sim 15)I_n$	$\pm 10\%$	$1I_n\sim 30kA$	$\pm 15\%$	$(0.2\sim 1)I_n$	$\pm 10\%$	
$(0.4\sim 1)I_n$	$\star(2\sim 10)I_n$	$\pm 10\%$	$\star(5\sim 20)I_n$	$\pm 15\%$	$\star(0.2\sim 0.8)I_n$	$\pm 10\%$	

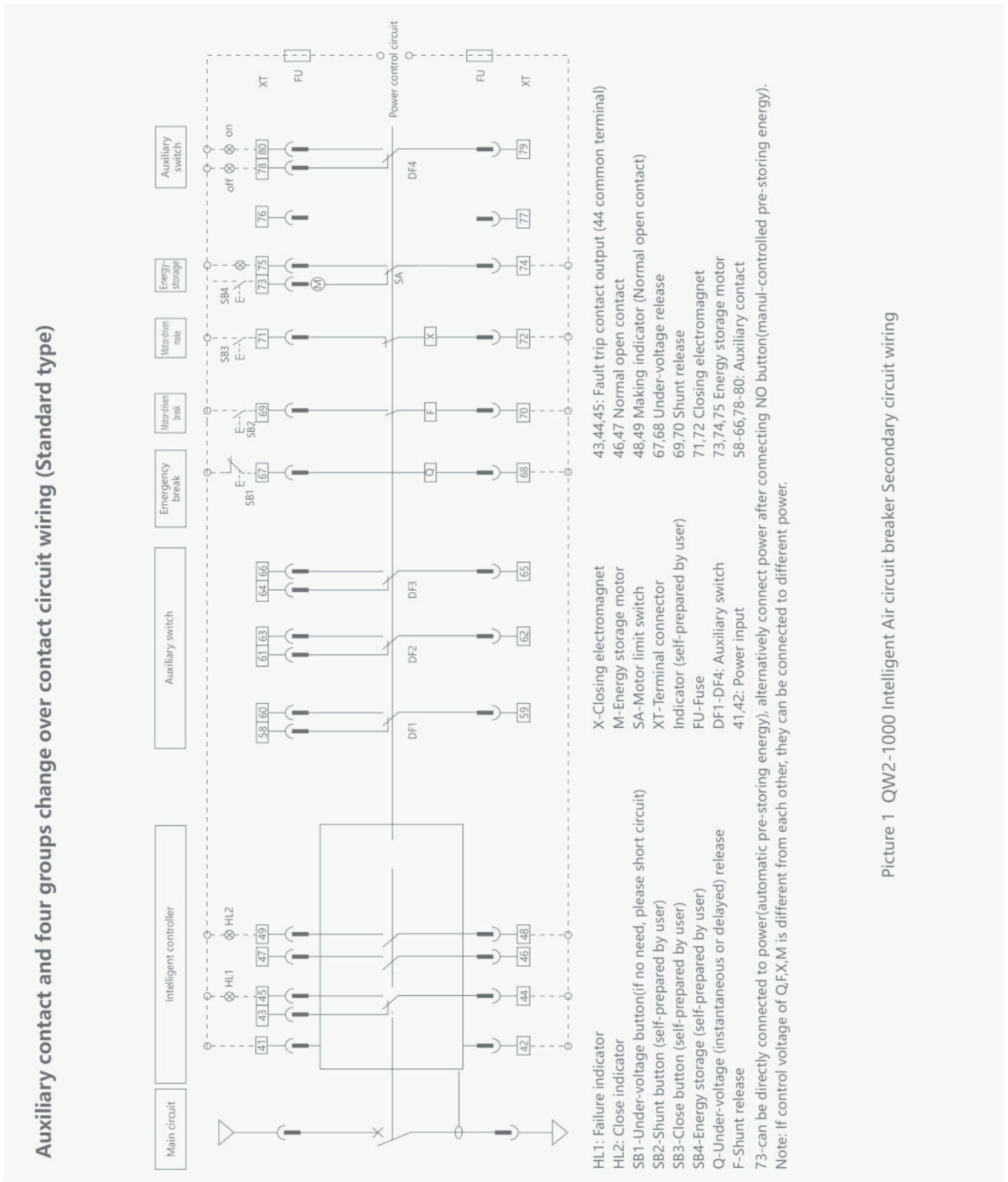
Note: L type intelligent controller setting with \star

Over-current and earthing fault characteristic curve figure



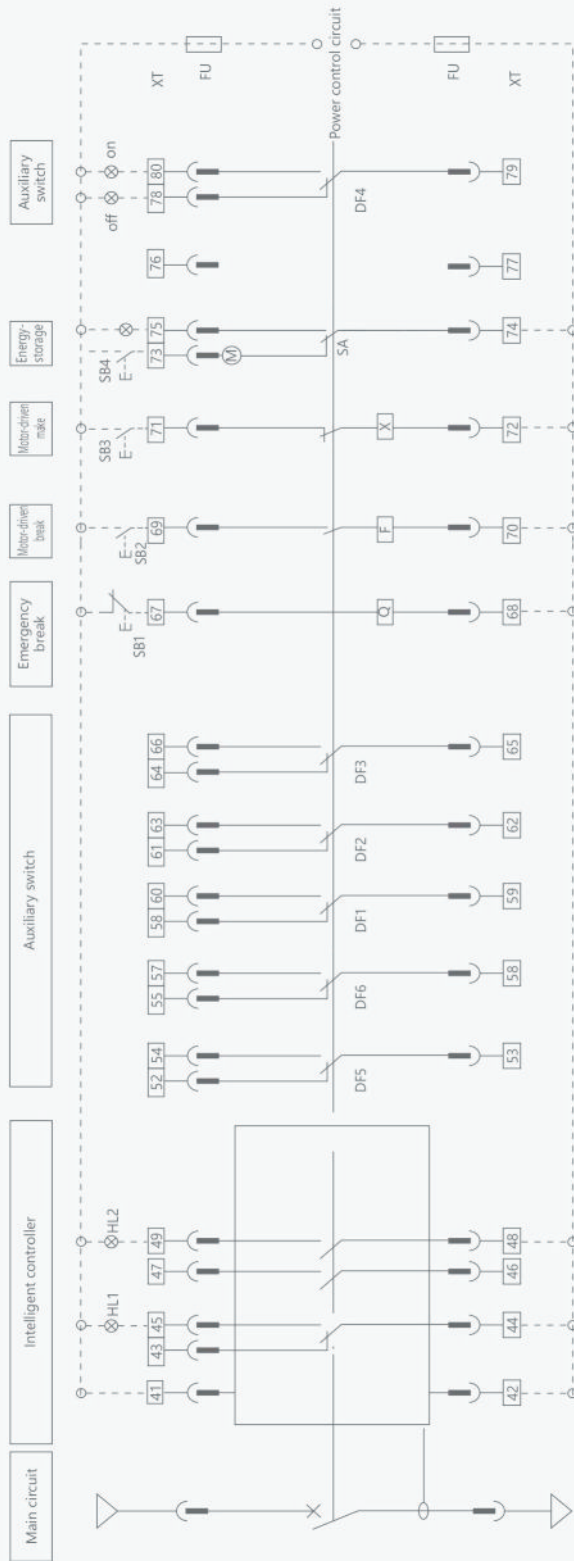
Secondary circuit wiring

The circuit breaker has 40pcs terminal connector, please refer to picture1, picture2, picture3.



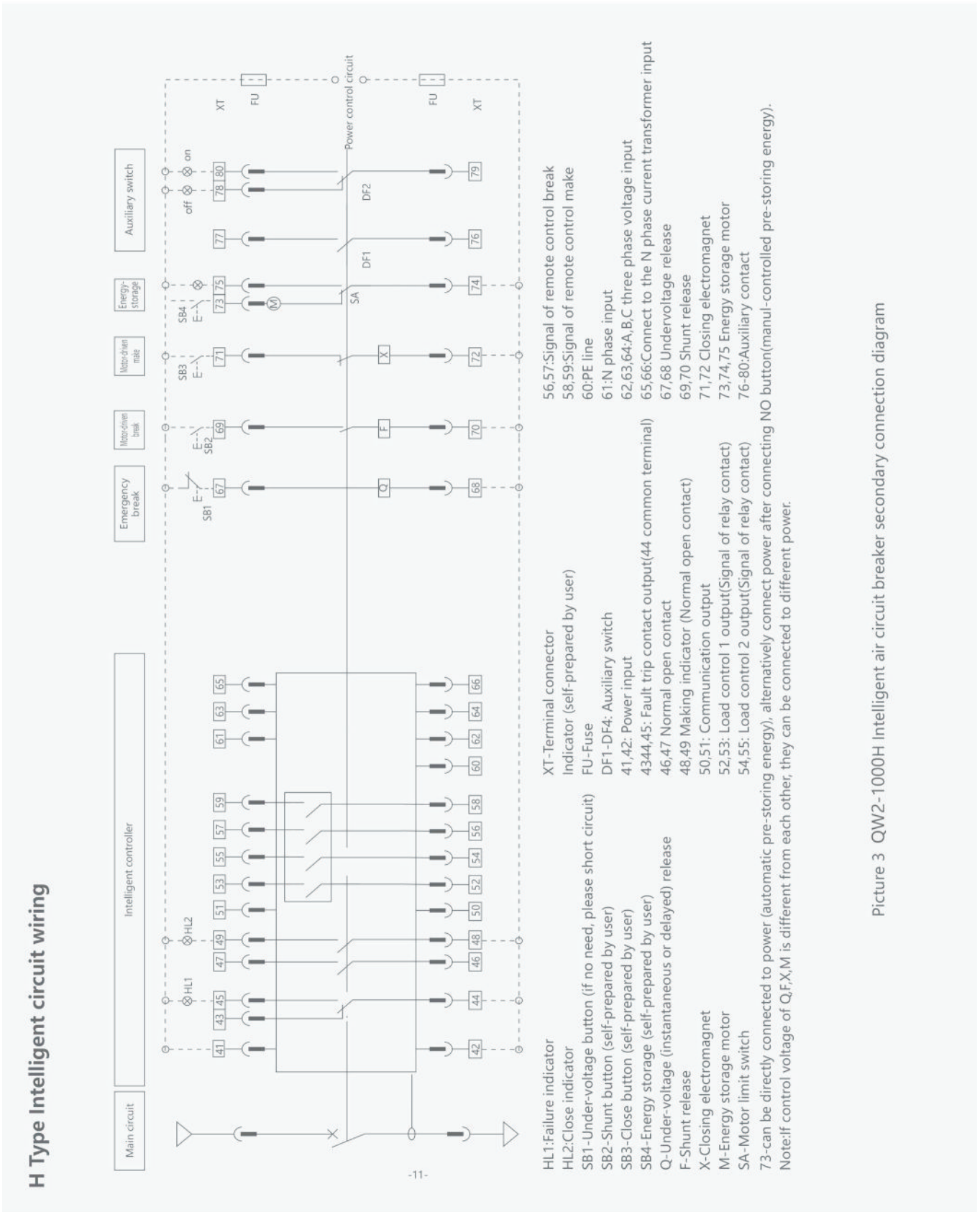
Picture 1 QW2-1000 Intelligent Air circuit breaker Secondary circuit wiring

Auxiliary contact and six groups change over contact wiring (Special type)



- HL1: Failure indicator
 - HL2: Close indicator
 - SB1: Under-voltage button (if no need, please short circuit)
 - SB2: Shunt button (self-prepared by user)
 - SB3: Close button (self-prepared by user)
 - SB4: Energy storage (self-prepared by user)
 - Q: Under-voltage (instantaneous or delayed) release
 - F: Shunt release
 - 73: can be directly connected to power (automatic pre-storing energy), alternatively connect power after connecting NO button(manul-controlled pre-storing energy).
 - Note: if control voltage of Q,F,X,M is different from each other, they can be connected to different power.
-
- X: Closing electromagnet
 - M: Energy storage motor
 - SA: Motor limit switch
 - XT: Terminal connector
 - Indicator (self-prepared by user)
 - FU: Fuse
 - DF1-DF4: Auxiliary switch
 - 41, 42: Power input
-
- 4344, 45: Fault trip contact output (44 common terminal)
 - 46, 47: Normal open contact
 - 48, 49: Making indicator (Normal open contact)
 - 67, 68: Under-voltage release
 - 69, 70: Shunt release
 - 71, 72: Closing electromagnet
 - 73, 74, 75: Energy storage motor
 - 58-66, 78-80: Auxiliary contact

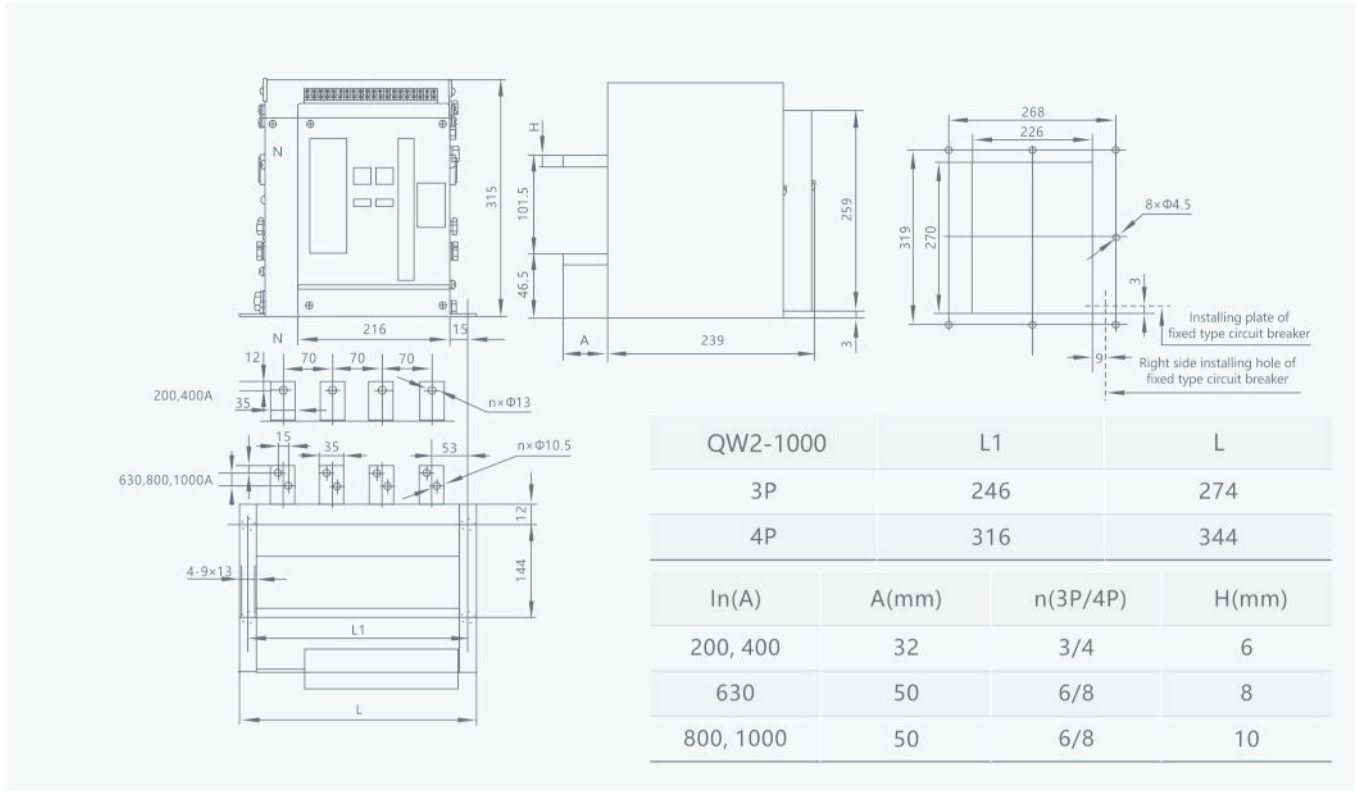
Picture 2 QW2-1000 Intelligent Air circuit breaker Secondary circuit wiring



Picture 3 QW2-1000H Intelligent air circuit breaker secondary connection diagram

Overall and Installation Dimension

QW2-1000 Fixed type



QW2-1000 Draw out type

